


# Google Earth instructions for establishing a Contest Box image



## To set-up a completely new box:

- Unzip this Zip file to a folder in your computer – there are 5 Box graphics plus this explanatory pdf.
- Open Google Earth and zoom in to your airfield. Make sure the ground is horizontal and N-S is correct by clicking the 'N' and then the 'v' symbols on the compass circle at the top-right of the screen.
- Use 'Tools > Ruler' to draw a 1,000m horizontal reference line roughly where you want the box to be. Save the line to some temporary name, e.g. "test-1000m" – do not Clear it, that will make it disappear!
- Click 'Add > Image Overlay' or press Ctrl+Shift+O, then click Browse to use one of the graphic files in this zip. These provide boxes with 1, 2, 3 and 4 judge locations, and one with a full box and the 50m boundary as here. Note that the yellow box markers are shown at **10 times** the correct 9m x 2m size for clarity.

- The Google Earth "Rules" for manipulating graphic overlays are quite strange. Pay attention especially with **re-size**, otherwise the image will lose its original width-to-height scale and the only way out is to start again. The cursor changes from a closed hand to a pointy finger when it is in the right place to carry out each of the actions below: 

Use the actions below repeatedly to get one side of the box exactly the same length as your 1,000m line, then rotate it as required:

- **To re-size the image:**

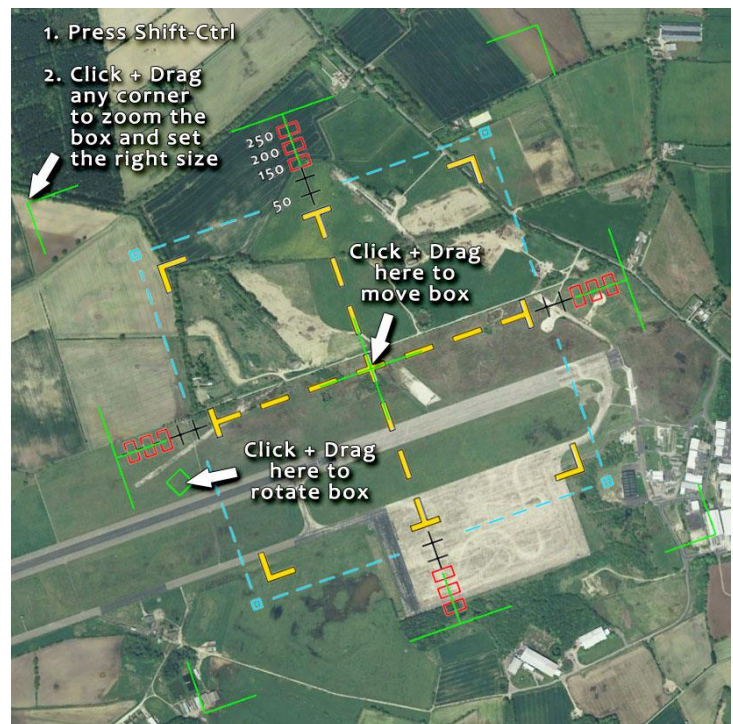
First hold the Shift+Ctrl keys down together, then Click & Drag an image corner where Google has added the big green "L" markers.

- **To move the image:**

Click & Drag the exact centre of the image to move the box around.

- **To rotate the image:**

Click & Drag in the small green rectangle to align the box with a reference line – like a runway.



- When the box is correctly positioned and at exactly the right size, in the Google Earth panel Temporary Places on the left find and un-tick the checkbox for the 1km line you drew and it will be hidden.
- You can continue to move the aerobatic box graphic by Click & Drag on its centre-point and rotate it by Click & Drag in the small green box. **Do not** Click & Drag a corner as this will alter the image size and you will have to display your 1km line again to re-adjust the box size ... Ctrl+Z does not work!
- Give your new Google Overlay a suitable title and Save it – it will appear now in the Places listing.
- To permanently save the result, right-click your new overlay title in the Places sidebar and select 'Save Place As' to copy the overlay to a folder in your computer. This ".kmz" file can be transferred to a memory stick, emailed or placed on a website for download. Double-clicking or Opening it will fire-up Google Earth with your box displayed in the same place in Google Earth.

## To edit / change an existing box

- Select and then Right-Click the box title in the list of Google Earth Places.
- Click the 'Properties' option and the above edit system becomes live again.